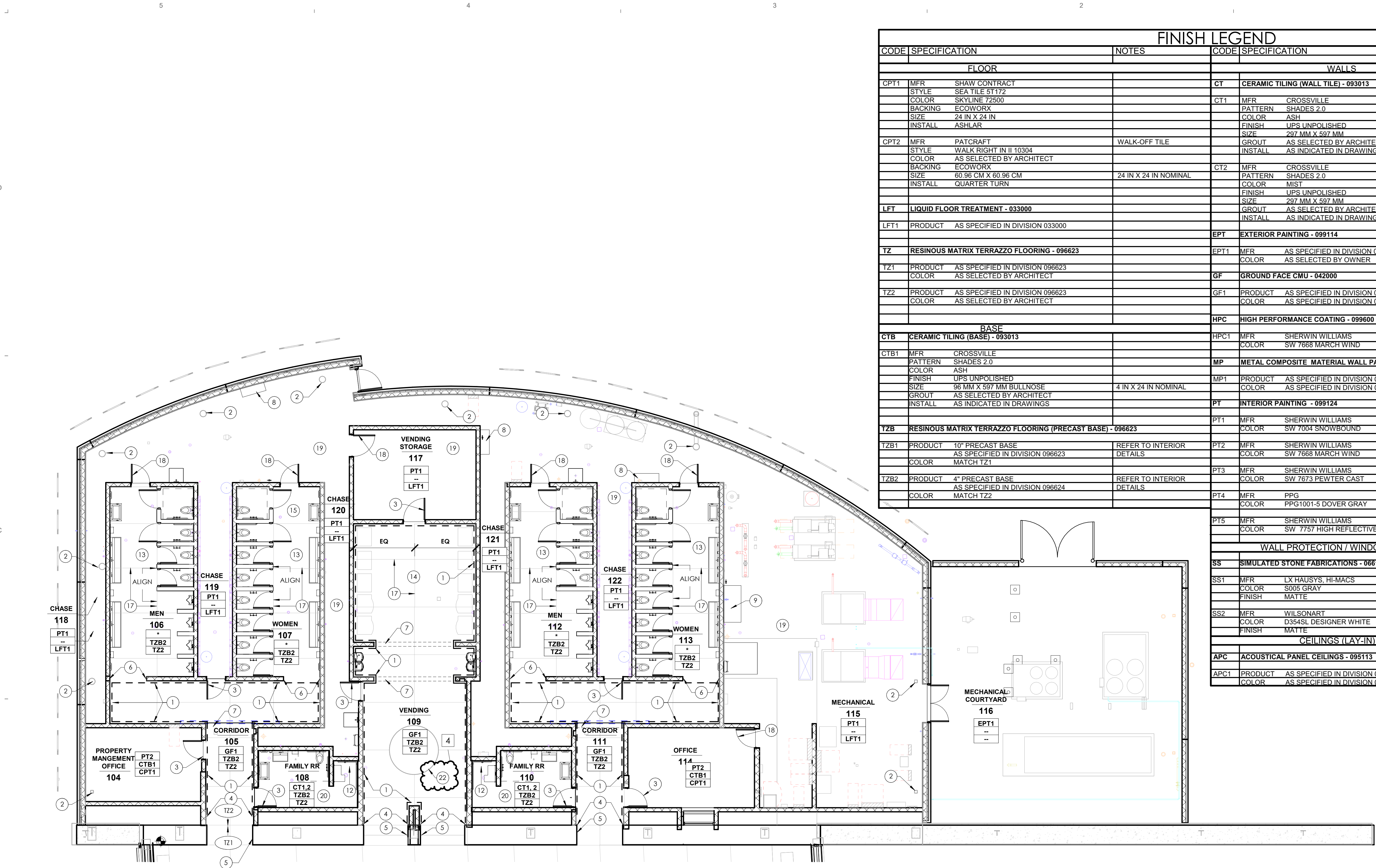
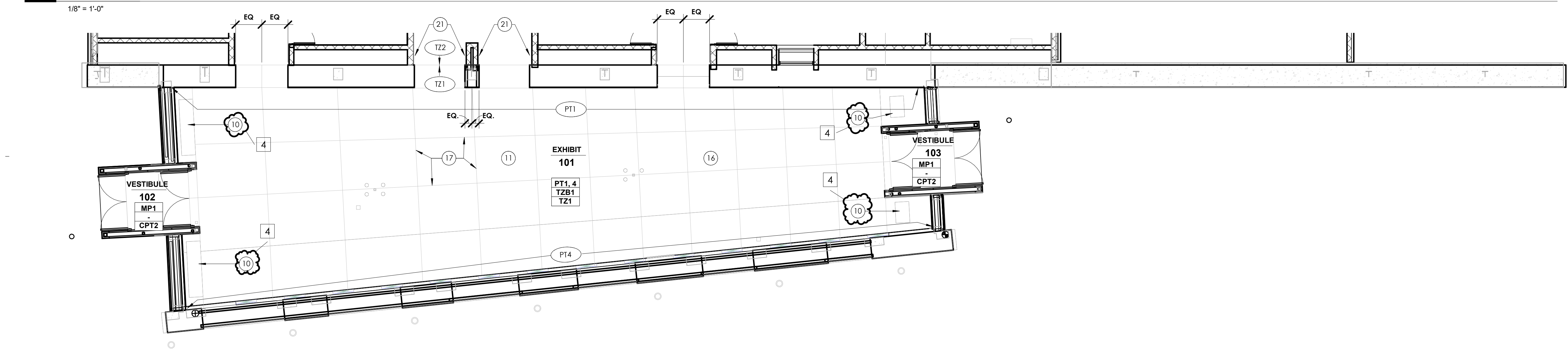


3/22/2023 4:00:11 PM \\synth-dc1\HomeDir\Kaling\Documents\0350006 - Clear Creek Welcome Center - WC_A231.dwg
Copyright 2022 Synthesis Incorporated



B5 INTERIOR FINISH PLAN - RESTROOM AREA



A5 INTERIOR FINISH PLAN - EXHIBIT AREA

FINISH LEGEND			
CODE	SPECIFICATION	NOTES	CODE
FLOOR			WALLS
CPT1	MFR SHAW CONTRACT		CT CERAMIC TILING (WALL TILE) - 093013
	STYLE SEA TILE ST172		
	COLOR SKYLINE 72500		
	BACKING ECOWORX		
	SIZE 24 IN X 24 IN		
	INSTALL ASHLAR		
CPT2	MFR PATCRAFT	WALK-OFF TILE	CT1 MFR CROSSVILLE
	STYLE WALK RIGHT IN II 10304		PATTERN SHADES 2.0
	COLOR AS SELECTED BY ARCHITECT		COLOR ASH
	BACKING ECOWORX		FINISH UPS UNPOLISHED
	SIZE 60.96 CM X 60.96 CM	24 IN X 24 IN NOMINAL	SIZE 297 MM X 597 MM
	INSTALL QUARTER TURN		12 IN X 24 IN NOMINAL
LFT	LIQUID FLOOR TREATMENT - 033000		CT2 MFR CROSSVILLE
LFT1	PRODUCT AS SPECIFIED IN DIVISION 033000		PATTERN SHADES 2.0
			COLOR MIST
			FINISH UPS UNPOLISHED
			SIZE 297 MM X 597 MM
			12 IN X 24 IN NOMINAL
			GROUT AS SELECTED BY ARCHITECT
			INSTALL AS INDICATED IN DRAWINGS
TZ	RESINOUS MATRIX TERRAZZO FLOORING - 096623		EPT EXTERIOR PAINTING - 099114
TZ1	PRODUCT AS SPECIFIED IN DIVISION 096623		EPT1 MFR AS SPECIFIED IN DIVISION 099114
	COLOR AS SELECTED BY ARCHITECT		COLOR AS SELECTED BY OWNER
TZ2	PRODUCT AS SPECIFIED IN DIVISION 096623		GF GROUND FACE CMU - 042000
	COLOR AS SELECTED BY ARCHITECT		GF1 PRODUCT AS SPECIFIED IN DIVISION 042000
			COLOR AS SPECIFIED IN DIVISION 042000
			HPC HIGH PERFORMANCE COATING - 099600
CTB	CERAMIC TILING (BASE) - 093013		HPC1 MFR SHERWIN WILLIAMS
CTB1	MFR CROSSVILLE		COLOR SW 7668 MARCH WIND
	PATTERN SHADES 2.0		
	COLOR ASH		MP METAL COMPOSITE MATERIAL WALL PANEL - 074213.23
	FINISH UPS UNPOLISHED		MP1 PRODUCT AS SPECIFIED IN DIVISION 074213.23
	SIZE 60.96 CM X 60.96 CM BULLNOSE	4 IN X 24 IN NOMINAL	COLOR AS SPECIFIED IN DIVISION 074213.23
	GROUT AS SELECTED BY ARCHITECT		
	INSTALL AS INDICATED IN DRAWINGS		PT INTERIOR PAINTING - 099124
TZB	RESINOUS MATRIX TERRAZZO FLOORING (PRECAST BASE) - 096623		PT1 MFR SHERWIN WILLIAMS
TZB1	PRODUCT 10" PRECAST BASE	REFER TO INTERIOR DETAILS	COLOR SW 7004 SNOWBOUND
	AS SPECIFIED IN DIVISION 096623		
TZB2	PRODUCT 4" PRECAST BASE	REFER TO INTERIOR DETAILS	PT2 MFR SHERWIN WILLIAMS
	AS SPECIFIED IN DIVISION 096624		COLOR SW 7668 MARCH WIND
			PT3 MFR SHERWIN WILLIAMS
			COLOR SW 7673 PEWTER CAST
			PT4 MFR PPG
			COLOR PPG1001-5 DOVER GRAY
			PT5 MFR SHERWIN WILLIAMS
			COLOR SW 7757 HIGH REFLECTIVE WHITE
			WALL PROTECTION / WINDOW SILLS
			SS SIMULATED STONE FABRICATIONS - 066100
			SS1 MFR LX HAUSYS, HI-MACS
			COLOR S005 GRAY
			FINISH MATTE
			SS2 MFR WILSONART
			COLOR D358SL DESIGNER WHITE
			FINISH MATTE
			CEILING (LAY-IN)
			APC ACOUSTICAL PANEL CEILING - 095113
			APC1 PRODUCT AS SPECIFIED IN DIVISION 095113
			COLOR AS SPECIFIED IN DIVISION 095113

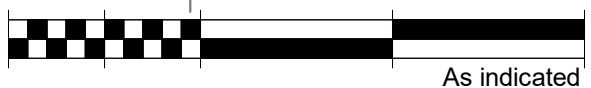
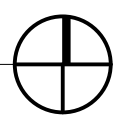
GENERAL FINISH PLAN NOTES

- ROOM FINISH TAG: **WALL**
BASE
FLOOR
- FINISH LEGEND PROVIDES PRODUCT INFORMATION ONLY. REFER TO SPECIFICATIONS FOR ADDITIONAL INFORMATION.
 - PAINT AND HIGH PERFORMANCE COATINGS INDICATED IN FINISH LEGEND PROVIDE COLOR INFORMATION ONLY. REFER TO SPECIFICATIONS FOR PAINTING SYSTEM AND GLOSS LEVEL.
 - REFER TO PLAN NOTES AND ELEVATIONS FOR FINISHES INDICATED AS * IN FINISH TAG.
 - REFER TO TYPICAL Limestone DETAILS DRAWING FOR Limestone PATTERN.
 - REFER TO INTERIOR ELEVATIONS AND TYPICAL DETAIL DRAWINGS FOR ADDITIONAL FINISH INFORMATION.
 - REFER TO REFLECTED CEILING PLAN FOR BULKHEAD AND FINISH MATERIAL LOCATIONS.
 - PAINT METAL ACCESS PANELS AND OTHER DEVICE COVERS SCHEDULED TO BE PAINTED TO MATCH ADJACENT WALL SURFACE.
 - FLOOR FINISH TRANSITIONS SHALL OCCUR UNDER THE CENTERLINE OF THE DOOR IN ITS CLOSED POSITION UNLESS NOTED OTHERWISE. PROVIDE METAL DIVIDER STRIPS WHERE TERRAZZO MEETS CARPET TILE. REFER TO DOOR SCHEDULE FOR THRESHOLD INFORMATION WHERE TERRAZZO MEETS LIQUID FLOOR TREATMENT.
 - PROVIDE SS2 WHERE SOLID SURFACE WINDOW SILLS ARE INDICATED IN THE DRAWINGS.
 - CONTACT ARCHITECT IF DISCREPANCIES ARE FOUND BETWEEN DRAWINGS, SPECIFICATIONS, OR PRODUCT INFORMATION.
 - CERAMIC TILE OPTION:
CT1: LANDMARK CERAMICS, MASTERPLAN, METRO GREY, 12 IN X 24 IN NOMINAL, MATTE FINISH;
CT2: LANDMARK CERAMICS, MASTERPLAN, WHITE AVENUE, 12 X 24" NOMINAL, MATTE FINISH;
CTB1: LANDMARK CERAMICS, MASTERPLAN, METRO GREY, BULLNOSE BASE, 3 IN X 24 IN NOMINAL, MATTE FINISH.

FINISH PLAN NOTES

- GROUND FACE CMU, GF1.
- PAINT EXPOSED COLUMN TO MATCH ADJACENT PAINTED WALL.
- PAINT DOOR AND DOOR FRAME SURFACES ADJACENT TO GF1 WALL PT3. PAINT DOOR AND DOOR FRAME SURFACES ADJACENT TO PT1 OR PT2 PAINTED WALLS PT2.
- ALUMINUM TRIM. PAINT TRIM TO MATCH ADJACENT PT1 FINISH. REFER TO "OPENING THROUGH EXHIBIT WALL DETAIL" FOR ADDITIONAL INFORMATION.
- PAINT BULKHEAD TO MATCH ADJACENT PT1 FINISH. REFER TO "DRYWALL AT SLOPED PORTAL DETAIL" IN TYPICAL DETAILS DRAWING FOR ADDITIONAL INFORMATION.
- STAINLESS STEEL TRIM. REFER TO "TYPICAL RESTROOM OPENING DETAILS" IN TYPICAL DETAILS DRAWING.
- CONTINUE GF1 ON ALL BULKHEAD SURFACES.
- FOUR-POST METAL SHELVING, 18"D X 48" W. REFER TO SPECIFICATION DIVISION 105413 METAL STORAGE SHELVING FOR ADDITIONAL INFORMATION. COORDINATE LOCATION WITH OWNER.
- WORKBENCH 34"D X 72" W. REFER TO SPECIFICATION DIVISION 125700 INDUSTRIAL FURNITURE FOR ADDITIONAL INFORMATION. COORDINATE LOCATION WITH OWNER.
- TERRAZZO BENCH SEATING. SEE WC-A604 FOR ADDITIONAL INFORMATION.
- REFER TO "INTERIOR ELEVATION - EXHIBIT NORTH" FOR PT1 AND PT4 GYPSUM BOARD CEILING FOR COLOR.
- PAINT GYPSUM BOARD CEILING PT1.
- REFER TO INTERIOR ELEVATIONS FOR INFORMATION REGARDING CERAMIC TILE PATTERN AND COLOR LOCATIONS. PAINT GYPSUM BOARD CEILING AND GYPSUM BOARD WALL PT1. PAINT CONCRETE MASONRY UNITS HPC1.
- PAINT GYPSUM BOARD CEILING PT5.
- PROVIDE 10 FT. WIDE X FULL HEIGHT PT1 AND HPC1 MOCKUP FOR COLOR VERIFICATION PURPOSES. PAINT AND COATING COLORS TO BE CONFIRMED UNDER ACTUAL LIGHTING CONDITIONS WITH INSTALLED CERAMIC TILE. REFER TO DIVISIONS 099124 AND 099600 FOR ADDITIONAL MOCKUP REQUIREMENTS. COORDINATE MOCKUP LOCATION IN FIELD WITH ARCHITECT.
- PROVIDE PT1 AND PT4 PAINT MOCKUP FOR COLOR VERIFICATION PURPOSES. MOCKUP AREA TO INCLUDE 10 FT W. X FULL HEIGHT SECTION OF WALL AND ADJACENT 100 SF AREA OF CEILING/BULKHEAD. PAINT COLORS TO BE CONFIRMED UNDER ACTUAL LIGHTING CONDITIONS. REFER TO DIVISION 099124 FOR ADDITIONAL MOCKUP REQUIREMENTS. COORDINATE MOCKUP LOCATION IN FIELD WITH ARCHITECT.
- TERRAZZO METAL DIVIDER/CONTROL STRIP. FINAL PATTERN TO BE DETERMINED. REFER TO DIVISION 096623 FOR ADDITIONAL INFORMATION.
- PAINT DOOR AND DOORFRAME PT2.
- PAINT EXPOSED CEILING AREA TO MATCH ADJACENT PAINTED WALLS.
- REFER TO INTERIOR ELEVATIONS FOR CERAMIC TILE PATTERN AND LOCATION.
- REFER TO "OPENING THROUGH EXHIBIT WALL DETAIL" FOR TZB1 AND TZB2 PRECAST TERRAZZO BASE LOCATIONS AND TRANSITION.
- PROPOSED LOCATION OF INDIANA STATE SEAL. FINAL LOCATION TO BE COORDINATED WITH OWNER. SEE DS/WC-A604

KEY PLAN



As indicated



JANSSEN & SPAANS ENGINEERING
9120 Harrison Park Court
Indianapolis, Indiana 46216
PH: 317.254.9686
www.jsengr.com



251 N Illinois Street, Suite 200
Indianapolis, IN 46204
PH: 317.951.9500
www.synthinc.com



30 W Monroe Street, Suite 500
Chicago, IL 60603
PH: 312.465.2359
www.ratiodesign.com



5975 Castle Creek Parkway N Drive,
Suite 300 • Indianapolis, IN 46250
PH: 317.810.4141
www.applied-e-s.com



3535 East 96th Street, Suite 126
Indianapolis, IN 46240
PH: 317.872.8400
www.frpinc.com

DAPW PROJECT NUMBER: 84003001-22-058-C1

CLEAR CREEK WELCOME CENTER
5494 W 21 ROAD WEST TERRE HAUTE, IN
47885

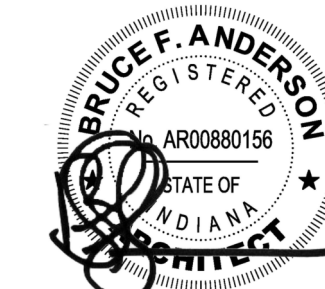
Issued For CONSTRUCTION DOCUMENTS
02.22.2023



STATE OF INDIANA
DEPARTMENT OF ADMINISTRATION

PUBLIC WORKS DIVISION

ROOM 104 INDIAN GOVERNMENT CENTER, 605 WEST WASHINGTON STREET
INDIANAPOLIS, INDIANA 46204
317.232.3000



Revision: 4 Addendum #4 03.23.23

Project Number: 37005000-21-019-C1

Requestion Number:

Account Number:

Designer: TC Drawing Date: 02.22.2023

Drafter: KLG Drawing Scale: As indicated

DAPW Approval:

Client Approval:

Reference Number: 13625

Building Reference:

Drawing Number:

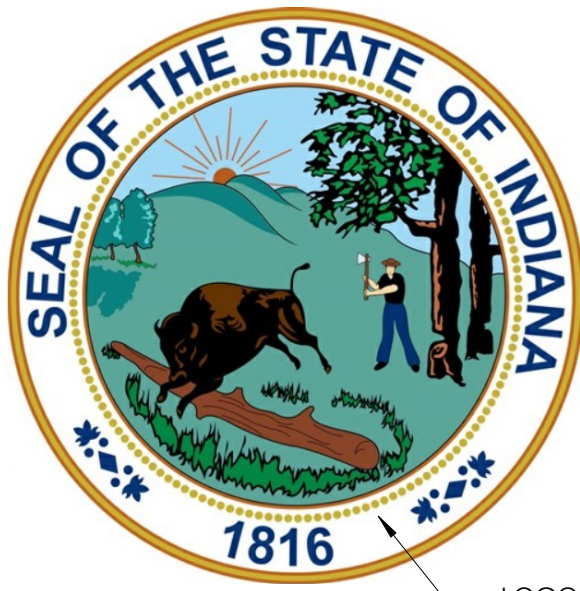
INTERIOR FINISH
PLANS

WC-A231

3/22/2023 4:00:13 PM \\ayrth-dc1\HomeDir\Kaling\Documents\0350006 - Clear Creek Welcome Center - WC2 - Jgordan.rvt
Copyright 2022 Synthesis Incorporated



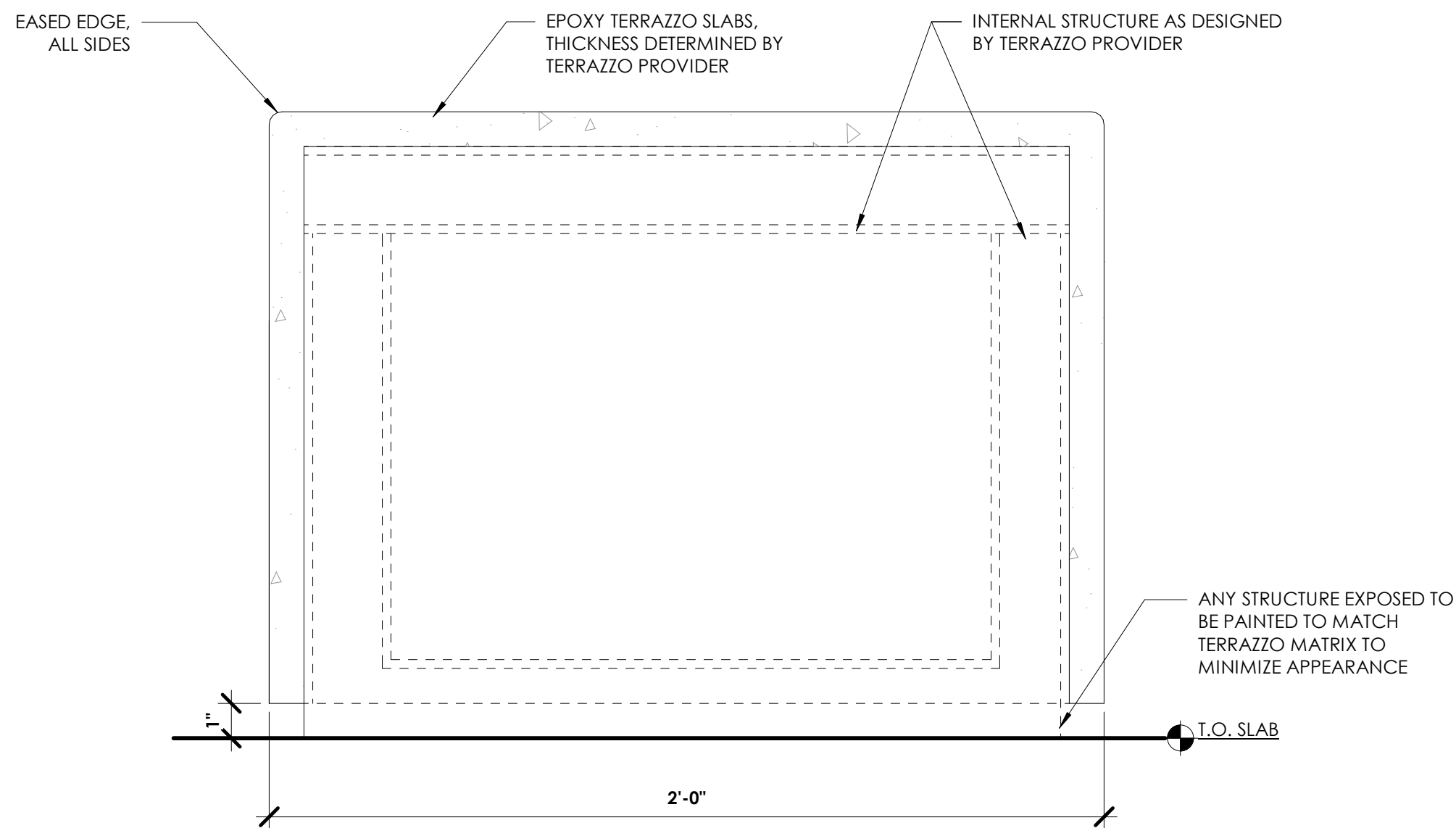
LOGO TO BE PLACED IN EXHIBIT - 101. FINAL LOCATION TO BE COORDINATED WITH OWNER



LOGO TO BE PLACED IN VENDING - 109. SEE WC-A231 - INTERIOR FINISH PLANS FOR PROPOSED LOCATION

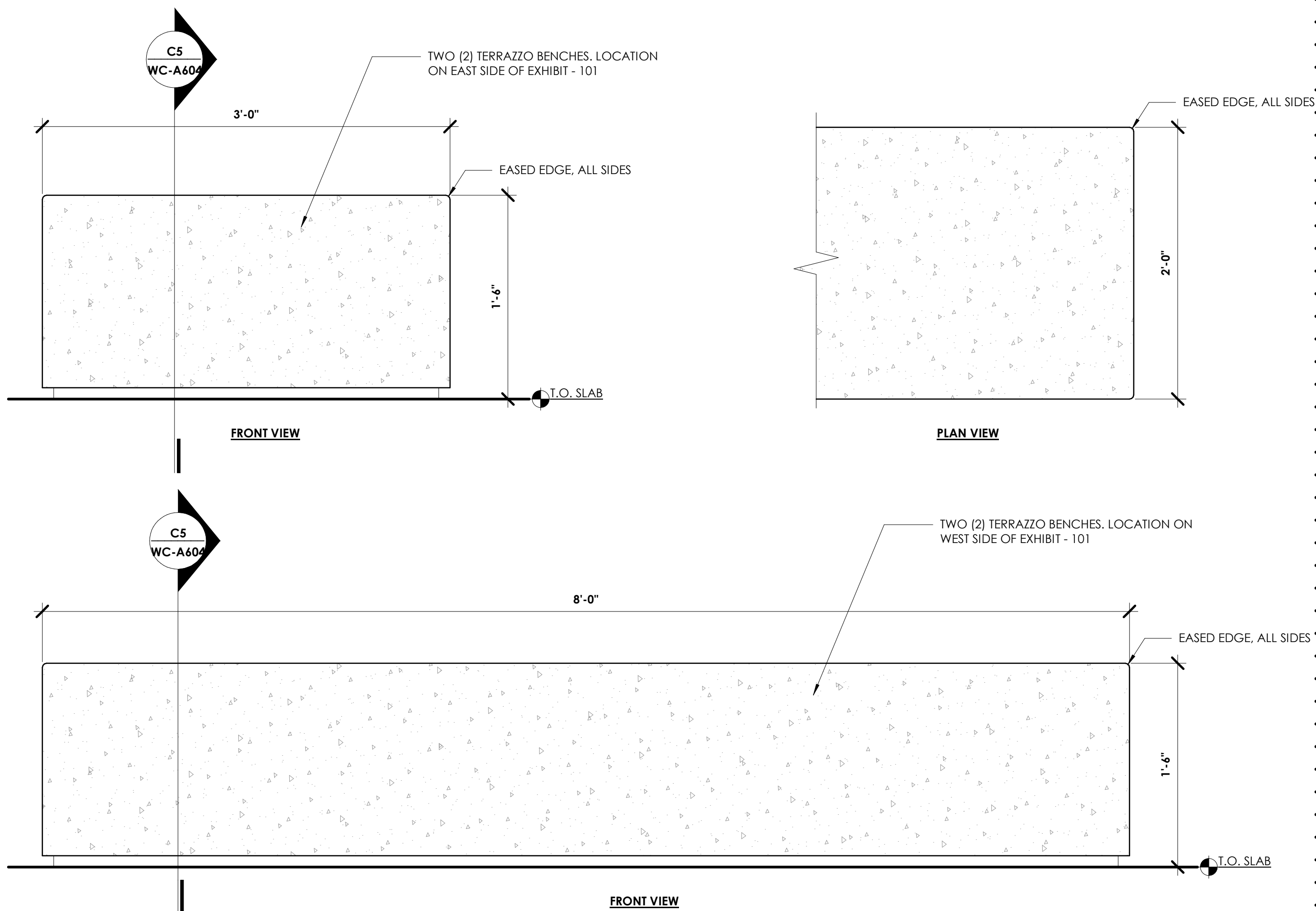
D5 TERRAZZO LOGO

NOT TO SCALE



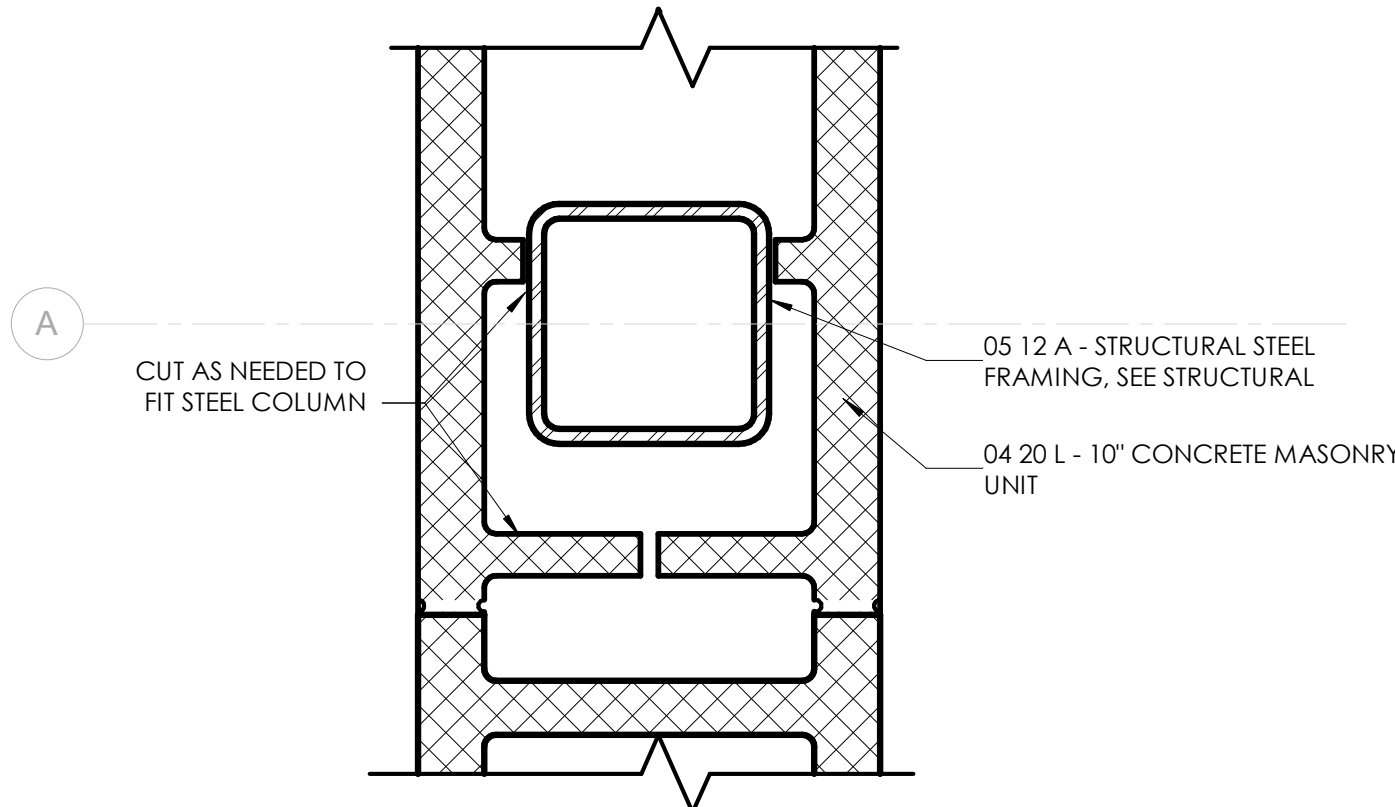
C5 TERRAZZO BENCH - SECTION

3" = 1'-0"



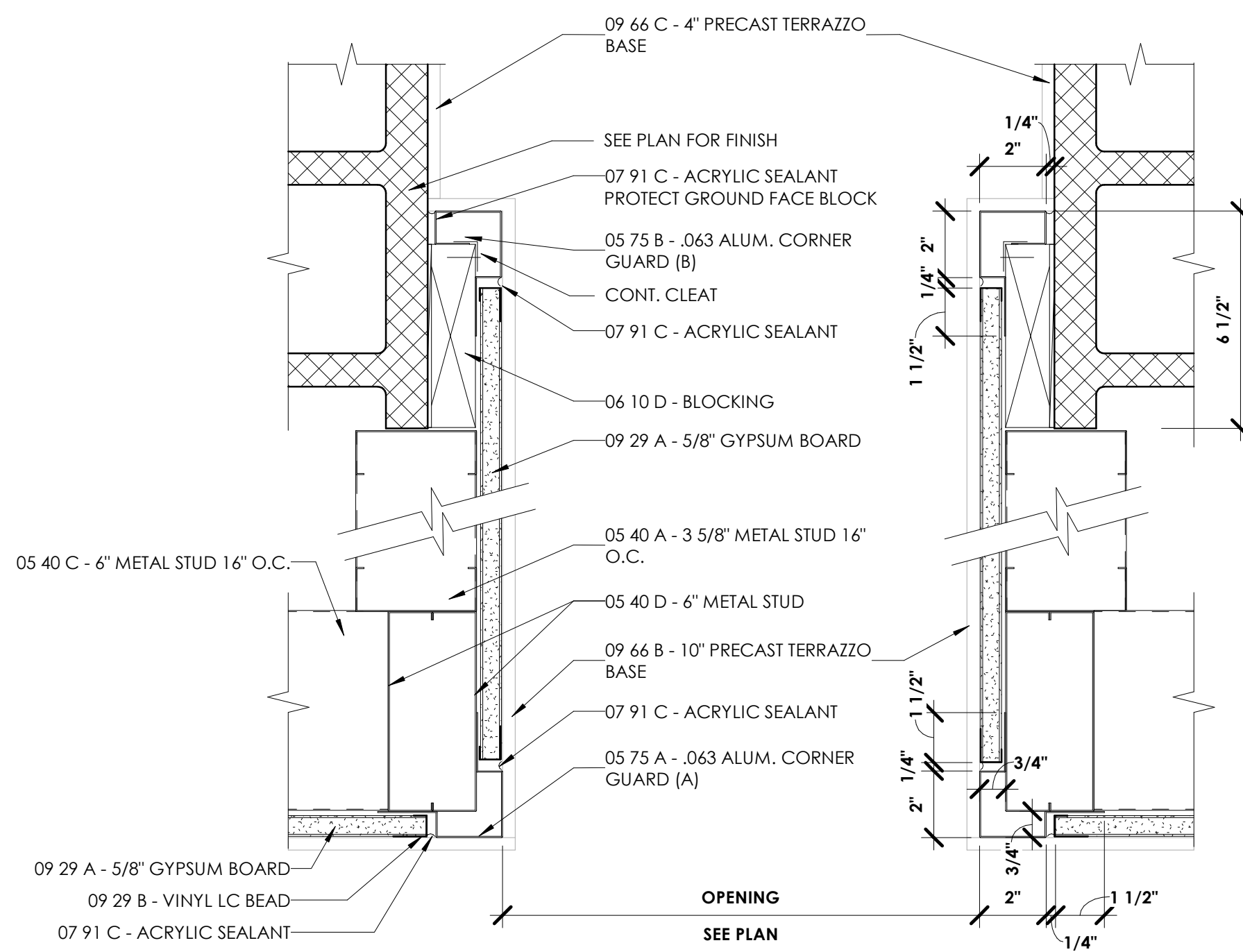
A5 TERRAZZO BENCH - ENLARGED PLAN AND ELEVATIONS

1 1/2" = 1'-0"



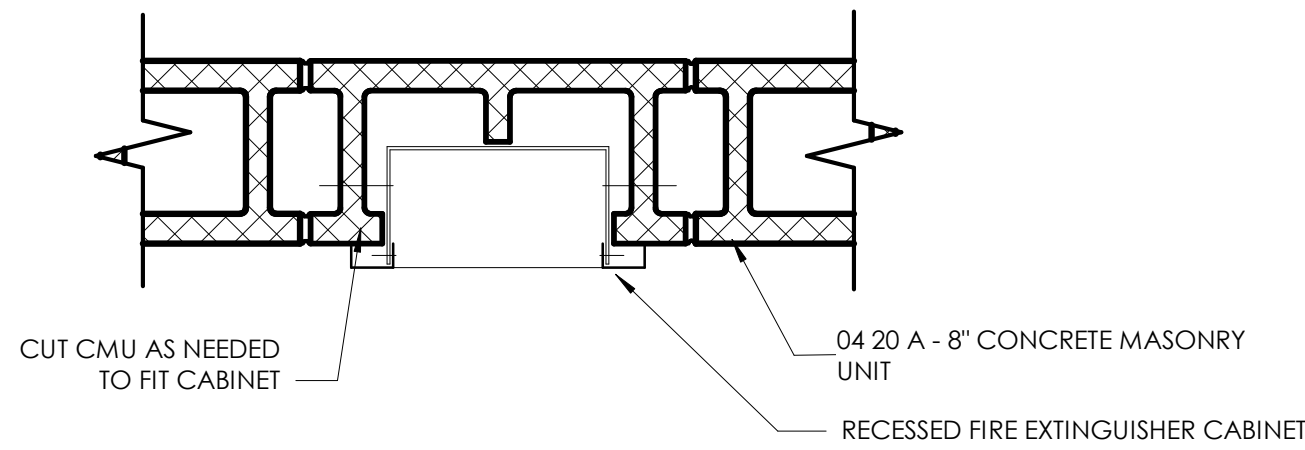
C3 EMBEDDED COLUMN CMU DETAIL

3" = 1'-0"



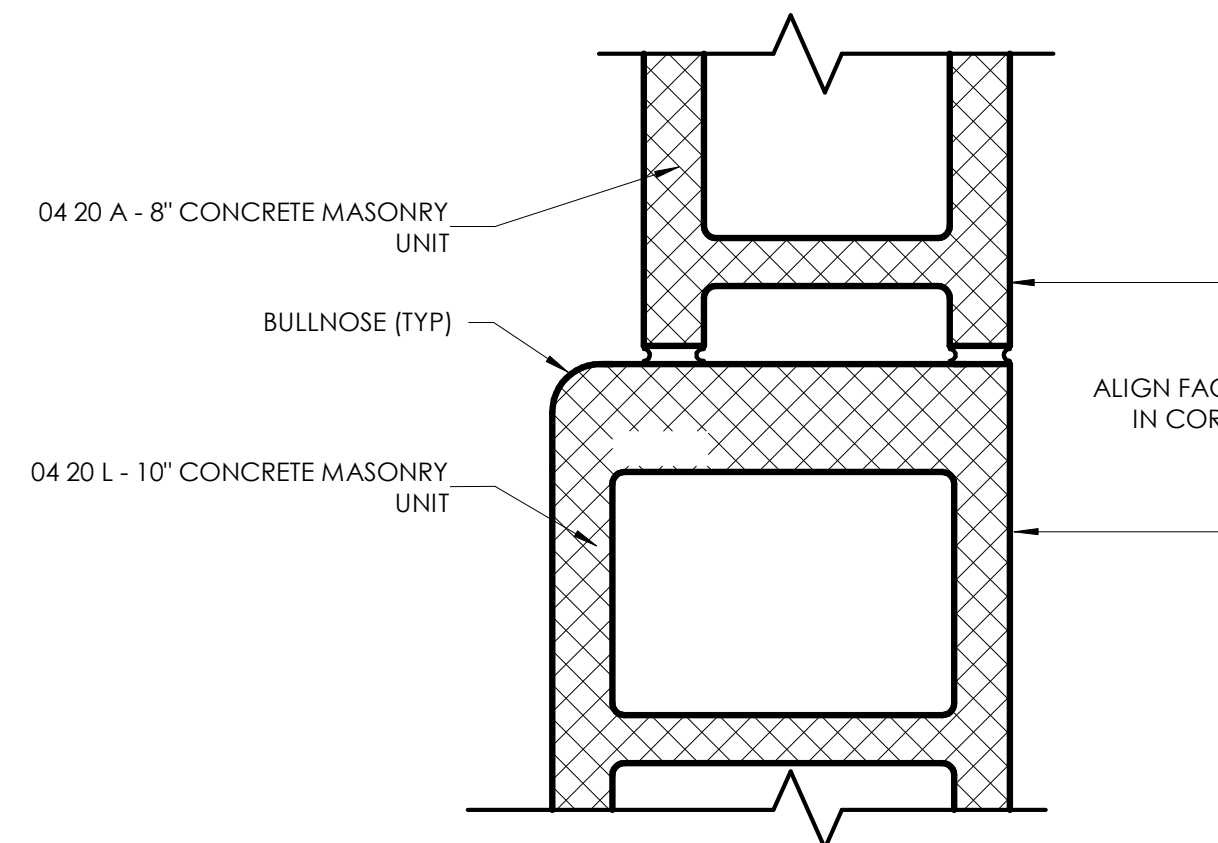
A3 OPENING THROUGH EXHIBIT WALL DETAIL

3" = 1'-0"



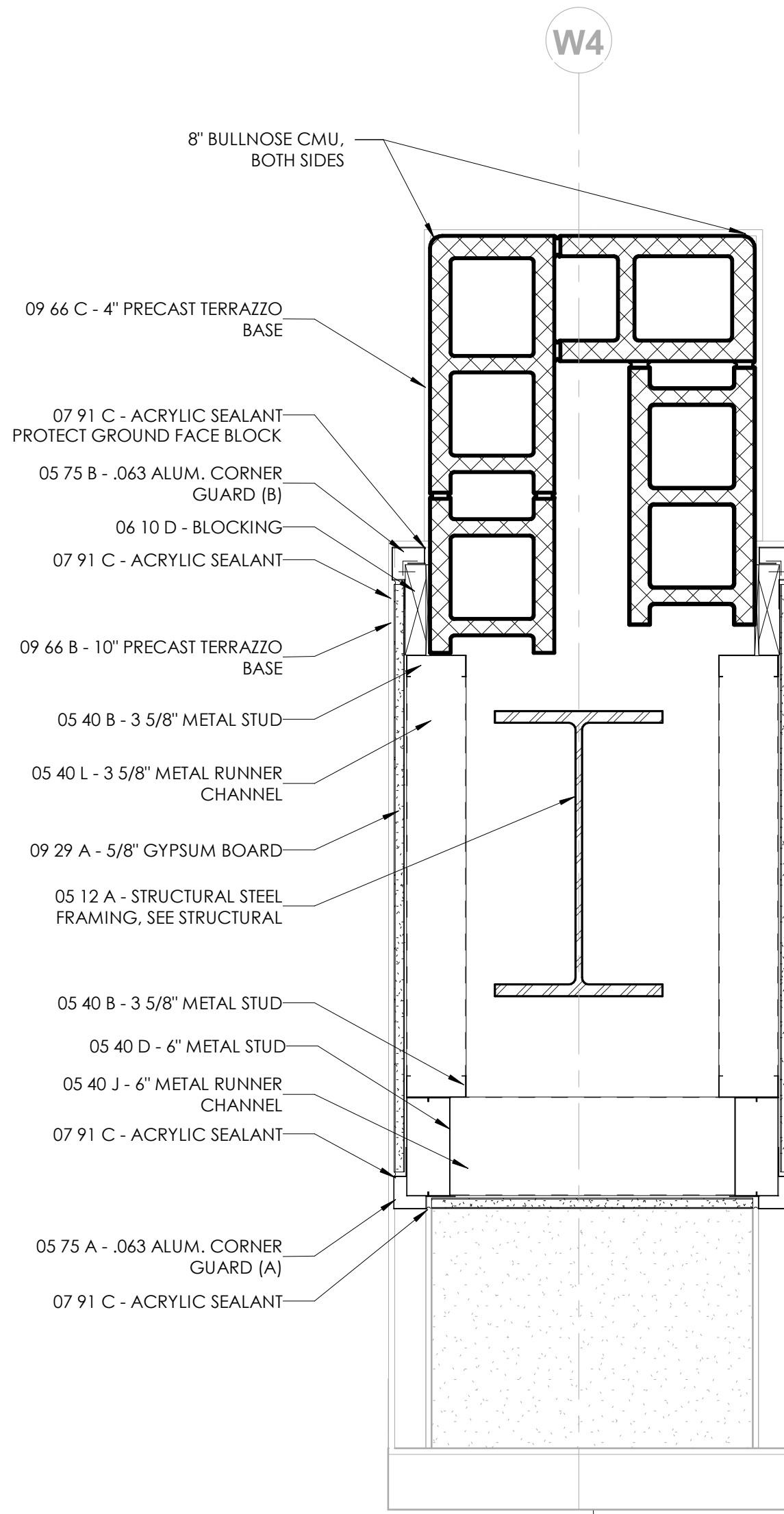
D1 RECESSED FIRE EXTINGUISHER CABINET DETAIL

1 1/2" = 1'-0"



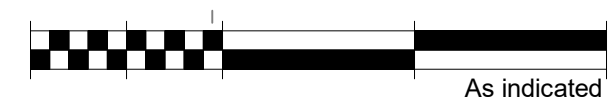
C1 CMU WALL TRANSITION DETAIL

3" = 1'-0"

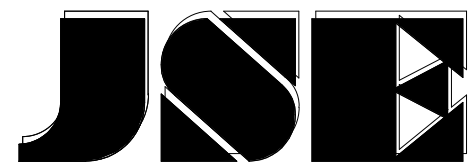


A1 EXHIBIT WALL COLUMN PLAN - RESTROOM AREA

1 1/2" = 1'-0"



As indicated



JANSSEN & SPAANS ENGINEERING
9120 Harrison Park Court
Indianapolis, Indiana 46216
PH: 317.254.9686
www.jsengr.com



synthesis
251 N Illinois Street, Suite 200
Indianapolis, IN 46204
PH: 317.951.9500
www.synthinc.com



RATIO
Landscape Architecture
30 W Monroe Street, Suite 500
Chicago, IL 60603
PH: 312.465.2359
www.ratiodesign.com



Applied
Engineering Services
5975 Castle Creek Parkway N Drive,
Suite 300 • Indianapolis, IN 46250
PH: 317.810.4141
www.applied-e-s.com



Fink Roberts & Petrie, Inc.
Structural Engineers
3535 East 96th Street, Suite 126
Indianapolis, IN 46240
PH: 317.872.8400
www.frpinc.com

DAPW PROJECT NUMBER: 84003001-22-058-C1

CLEAR CREEK WELCOME CENTER
5494 W 21 ROAD WEST TERRE HAUTE, IN
47885

Issued For CONSTRUCTION DOCUMENTS
02.22.2023



STATE OF INDIANA
DEPARTMENT OF ADMINISTRATION
PUBLIC WORKS DIVISION
ROOM 1400 INDIAN GOVERNMENT CENTER SOUTH
400 WEST WASHINGTON STREET
INDIANAPOLIS, INDIANA 46204
317-232-3000



Revision:	4 - Addendum #4	03.23.23
Project Number:	370050000-21-019-C1	
Requestion Number:		
Account Number:		
Designer:	TC	Drawing Date: 02.22.2023
Drafter:	RL	Drawing Scale: As indicated
DAPW Approval:		
Client Approval:		
Reference Number:	1362S	
Building Reference:		
Drawing Number:		

TYPICAL DETAILS

WC-A604



- | | |
|----|-------------------------------------------------------------------------------------------------------------------------------------------------------------------------------------------------------------------------------------|
| A. | DO NOT SCALE DRAWINGS. |
| B. | DIMENSIONS ARE TO/FROM FACE OF WALL, UNLESS NOTED OTHERWISE. |
| C. | NOTIFY ARCHITECT WHERE MOUNTING HEIGHTS ARE REQUIRED PRIOR TO INSTALLATION OF BLOCKING OR OTHER RELATED MATERIALS. |
| D. | PROVIDE BLOCKING AND FRAMING BETWEEN STUDS AND BLOCK AROUND AND BEHIND ITEMS RECESSED IN SURFACE MOUNTING. SEE DRAWINGS. REFER TO PROJECT MANUAL FOR BLOCKING REQUIRED TO SUPPORT MISCELLANEOUS ITEMS OR EQUIPMENT TO BE INSTALLED. |
| E. | INTERIOR PARTITIONS SHALL BE CONSTRUCTED PER WALL TYPE SCHEDULE. PREPARE SURFACES TO RECEIVE FINISHES AS INDICATED IN DOCUMENTS. |
| F. | SEAL BETWEEN FINISHED PLUMBING FIXTURES AND ADJACENT WALLS. |
| G. | CMU TO BE 8" BLOCK UNLESS OTHERWISE NOTED. |
| H. | OUTSIDE CORNERS OF REGULAR AND GROUND FACE CMU BLOCK TO HAVE BULLNOSE BLOCK TYPES. |
| I. | METAL COMPOSITE MATERIAL WALL PANELS SYSTEM TO BE COLOR NO. 1 UNLESS OTHERWISE NOTED. |

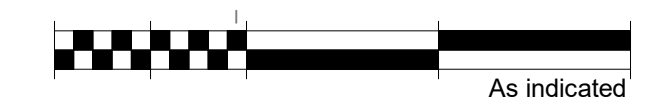
ARCH. PLAN NOTES

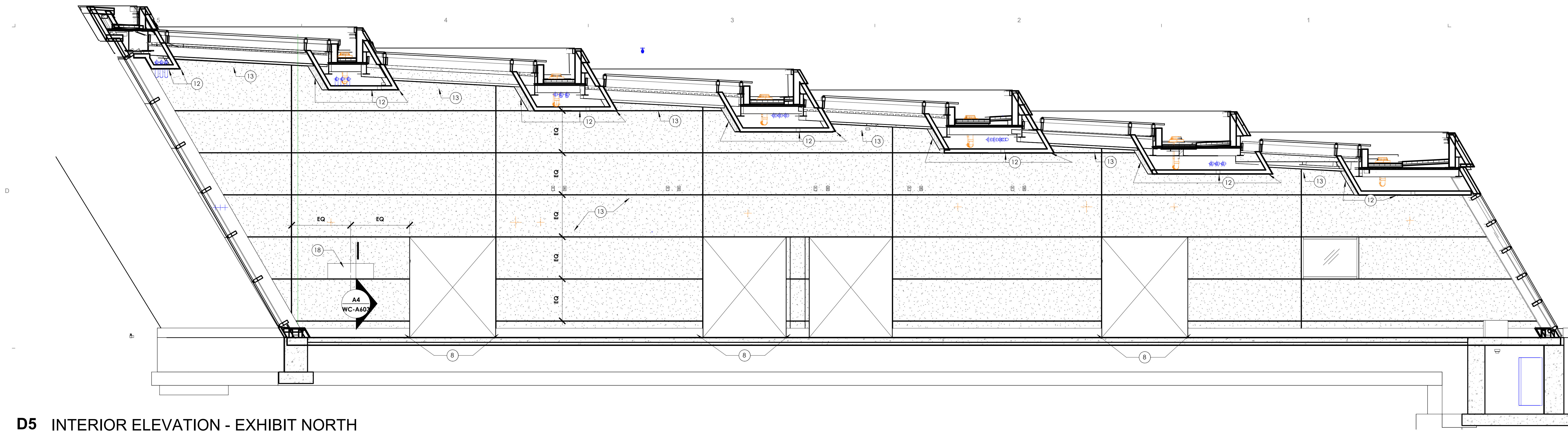
- 1 EXHIBIT DISPLAY LOCATIONS, COORDINATE FINAL LOCATIONS WITH VENDOR.
- 2 SLOPED EXHIBIT WALL, SEE WC-A420 SERIES FOR ADDITIONAL INFORMATION.
- 3 BRACKET WALL, SEE WC-A460 SERIES FOR ADDITIONAL INFORMATION.
- 4 SLOPED CURTAIN WALL SYSTEM, SEE WC-A431 FOR ADDITIONAL INFORMATION.
- 5 SLOPED CURTAIN WALL SYSTEM, SEE WC-A432 FOR ADDITIONAL INFORMATION.
- 6 BULLNOSE CMU BLOCK AT ALL OUTSIDE CORNERS, DOUBLE BULLNOSE BLOCK TO BE USED IF BOTH SIDES ARE OUTSIDE CORNERS.
- 7 TERRAZZO BENCH SEATING, SEE WC-A604 FOR ADDITIONAL INFORMATION.
- 8 WALL MOUNTED BENCHES, LOCATIONS, COORDINATE WITH OWNER FOR FINAL LOCATIONS, OWNER FURNISHED, CONTRACTOR INSTALLED.
- 9 VENDING MACHINES, OWNER FURNISHED, CONTRACTOR INSTALLED.
- 10 SLOPE CONCRETE SLAB TO DRAIN, SEE CIVIL.
- 11 PROVIDE WATERPROOFING SYSTEM INCLUDING UNDERSLAB MEMBRANE AND SIDE WALL MEMBRANE.
- 12 PROVIDE LIQUID FLOOR TREATMENT OF FLOOR SLAB OF TUNNEL.
- 13 SIDE WALL MOUNTED BOLLARD, SEE A721 FOR ADDITIONAL INFORMATION.
- 14 MECHANICAL UNIT, SEE MECHANICAL.
- 15 WORKBENCH 34" D X 72" W, REFER TO SPECIFICATION DIVISION 127500 FOR MATERIAL FURNISHING FOR ADDITIONAL INFORMATION.
- 16 LADDER FOR ROOF HATCH, SEE DETAIL A3/W-A601.



A5 NEW CONSTRUCTION FLOOR PLAN - EXHIBIT AREA

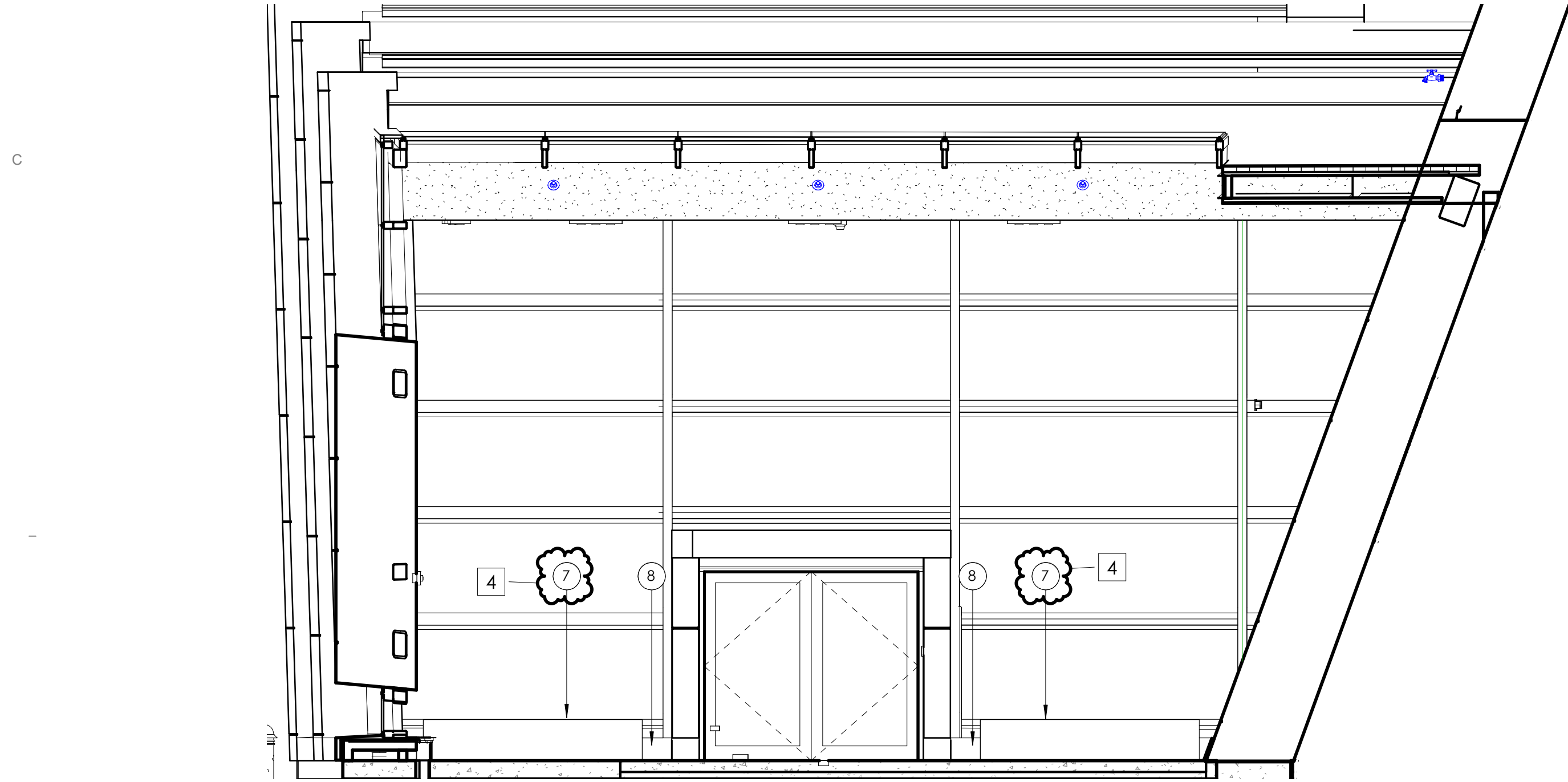
1/8" = 1'-0"





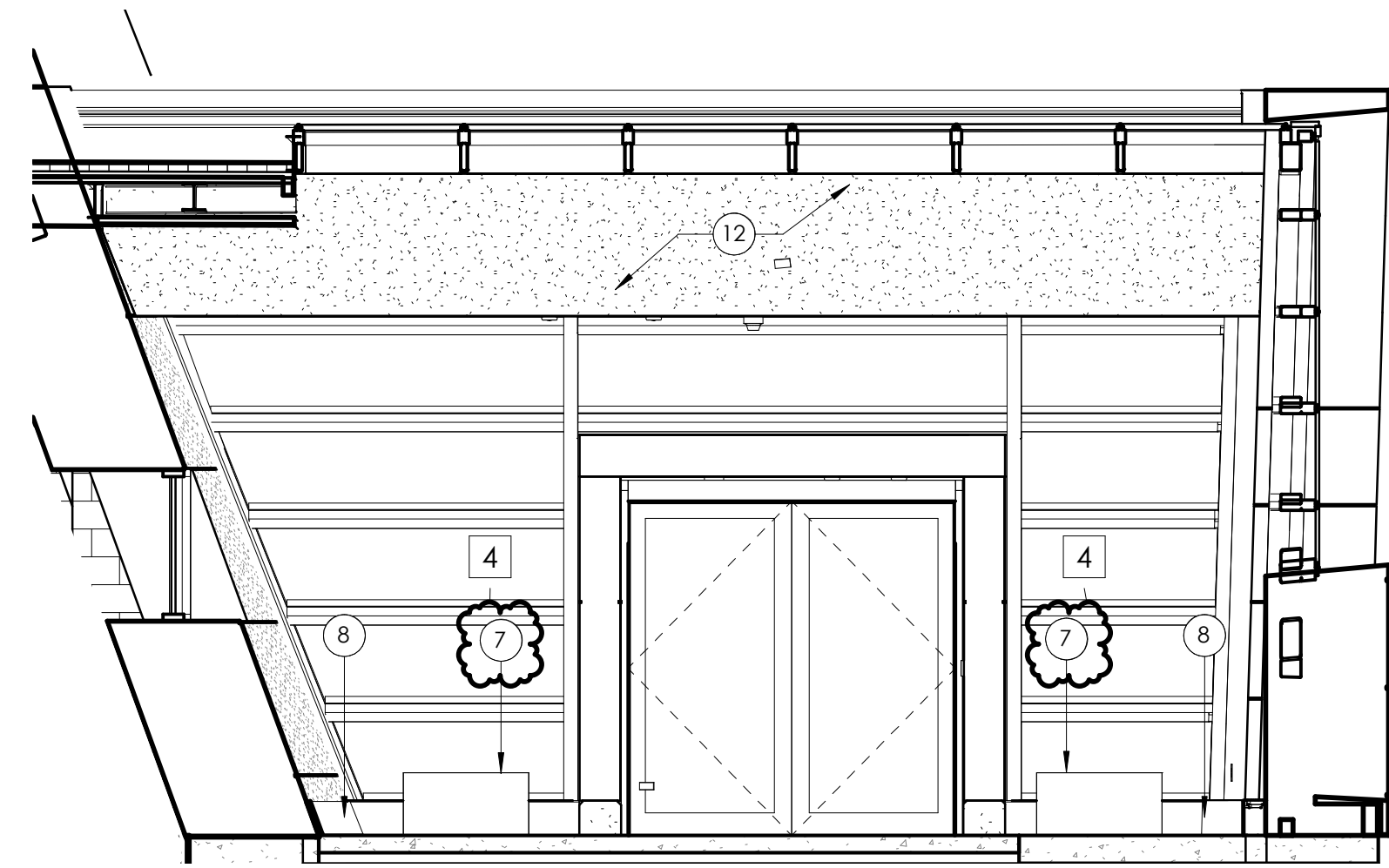
D5 INTERIOR ELEVATION - EXHIBIT NORTH

1/4" = 1'-0"



B5 INTERIOR ELEVATION - EXHIBIT WEST

1/4" = 1'-0"

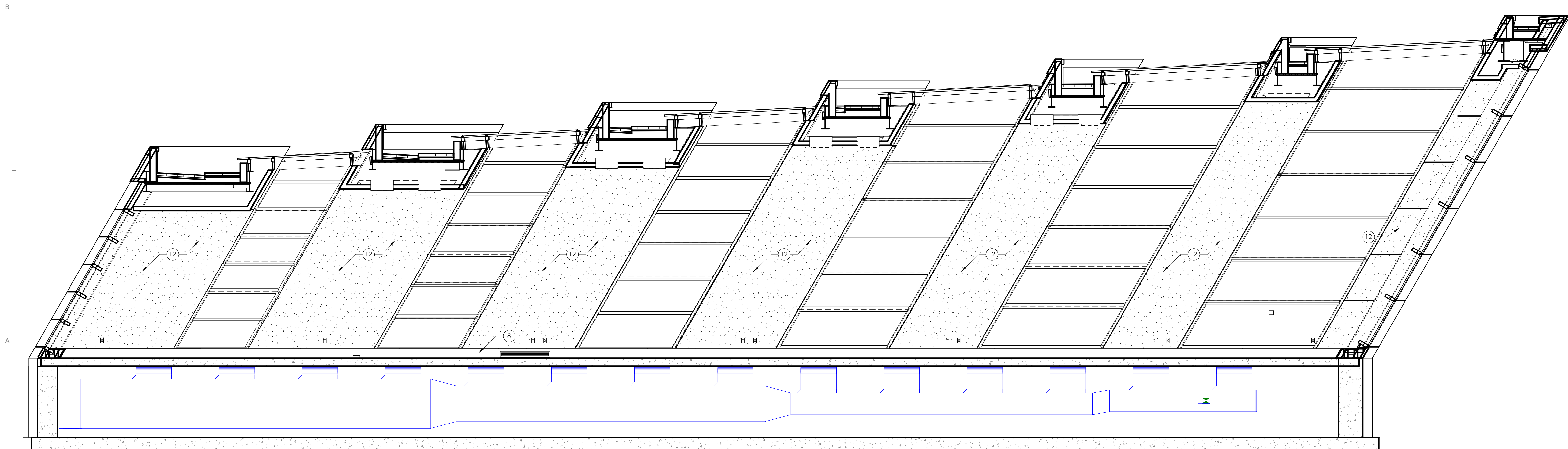


B2 INTERIOR ELEVATION - EXHIBIT EAST

1/4" = 1'-0"

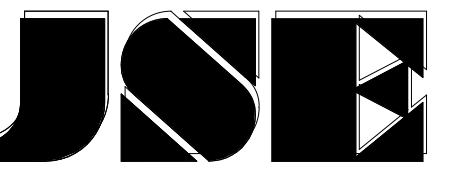
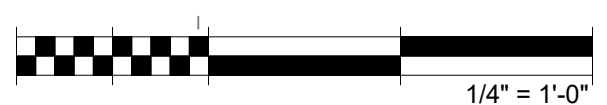
INTERIOR ELEVATION NOTES

1. CT2 CERAMIC TILE. SEE FINISH PLAN.
2. SOLID SURFACE WALL PROTECTION PANEL W (2' - 0") x H (5' - 4")
3. 8x8 BLOCK-OUT
4. TV MONITOR. PROVIDED BY OWNER.
5. AREA PROVIDED FOR WALL MOUNTED BROCHURE SHELF.
6. TERRAZZO BENCH SEATING. SEE WC-A604 FOR ADDITIONAL INFORMATION.
7. PRECAST TERRAZZO BASE. SEE FINISH PLAN.
8. HIGH PERFORMANCE COMING. SEE FINISH PLAN.
9. CONTROL JOINT.
10. PT4. REFER TO FINISH PLANS.
11. PT1. REFER TO FINISH PLANS.
12. CT1 (5) COURSE HIGH CERAMIC TILE WAINSCOT.
13. CT1 40" HIGH CERAMIC TILE WAINSCOT.
14. PAINT. SEE FINISH PLAN.
15. CERAMIC TILE BASE. SEE FINISH PLAN.
16. 16" x 48" PLAQUE. ALIGN BASE OF PLAQUE WITH WALL REVEAL.

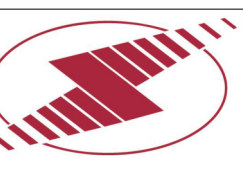


A5 INTERIOR ELEVATION - EXHIBIT SOUTH

1/4" = 1'-0"



JANSSEN & SPAANS ENGINEERING
9120 Harrison Park Court
Indianapolis, Indiana 46216
PH: 317.254.9686
www.jsengr.com



synthesis
251 N Illinois Street, Suite 200
Indianapolis, IN 46204
PH: 317.951.9500
www.synthinc.com

RATIO
Landscape Architecture
30 W Monroe Street, Suite 500
Chicago, IL 60603
PH: 312.465.2359
www.ratiodesign.com

Applied
Engineering Services
5975 Castle Creek Parkway N Drive,
Suite 300 • Indianapolis, IN 46250
PH: 317.810.4141
www.applied-e-s.com

Fink Roberts & Petrie, Inc.
FRP
Structural Engineers
3535 East 96th Street, Suite 126
Indianapolis, IN 46240
PH: 317.872.8400
www.frpinc.com

DAPW PROJECT NUMBER: 84003001-22-058-C1

CLEAR CREEK WELCOME CENTER
5494 W 21 ROAD WEST TERRE HAUTE, IN
47885

Issued For CONSTRUCTION DOCUMENTS
02.22.2023



STATE OF INDIANA
DEPARTMENT OF ADMINISTRATION
PUBLIC WORKS DIVISION
ROOM 1406 INDIAN GOVERNMENT CENTER NORTH
400 WEST WASHINGTON STREET
INDIANAPOLIS, INDIANA 46204
317-232-3000



Revisions:		
1	Addendum #1	03.15.23
4	Addendum #4	05.23.23
Project Number:	37005000-21-019-C1	
Registration Number:		
Account Number:		
Designer:	TC	Drawing Date: 02.22.2023
Drafter:	RL	Drawing Scale: 1/4" = 1'-0"
DAPW Approval:		
Client Approval:		
Reference Number:	1362S	
Building Reference:		
Drawing Number:		

INTERIOR
ELEVATIONS

WC-A510